

# LOCAL 28 J.A.C.

## CLASS ANNOUNCEMENT

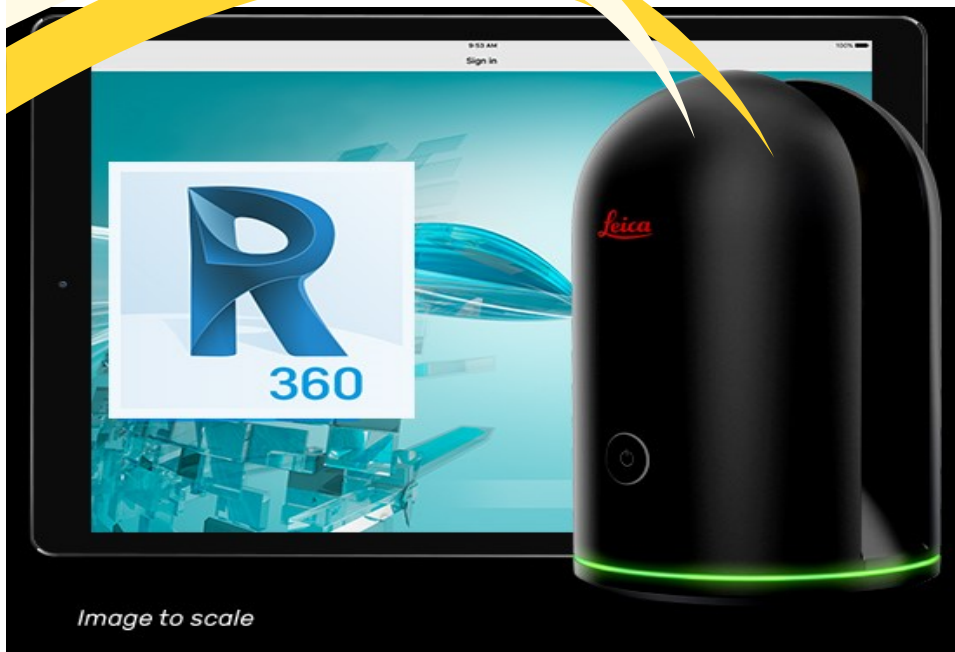
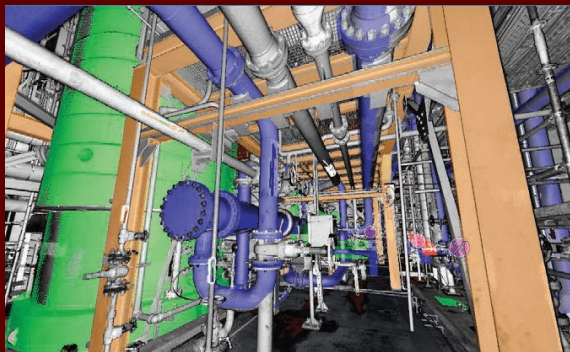


Image to scale

### 3D SCANNING

#### WHAT IS 3D SCANNING?

A 3D scanner, also known as a point cloud scanner is an electronic/optical instrument used in modern surveying and building construction. 3D scanners allow contractors to quickly and efficiently survey existing conditions and other items related to the construction of buildings.



#### The future!

3D scanners have quickly become one of the most efficient methods to capture as built conditions on a construction site.

Because more commercial and industrial construction jobs have become centered around Building Information Modeling (BIM) the capture and modeling of virtually every existing pipe, conduit, duct and hanger support are available with digital precision. The application of communicating a virtual model to a tangible construction model potentially helps reduce costs related to poorly surveyed construction sites, as well as time spent manually field measuring a site in the midst of a full blown construction job in progress.

Don't miss out on this exciting class. This is the future of construction.

REMEMBER

A TRAINED AND SKILLED WORKFORCE KEEPS LOCAL 28 MEMBERS IN DEMAND!!!!

### **LEICA BLK360 3D SCANNER**

THE SHEETMETAL WORKERS LOCAL 28 JOINT APPRENTICE COMMITTEE IN COOPERATION WITH THE SHEET METAL WORKERS INTERNATIONAL TRAINING INSTITUTE WILL BE HOSTING A CLASS ON 3D SCANNING ON THE FOLLOWING DATES:

#### **CLASS#1**

November 7th, 4:30pm-8:30pm

#### **CLASS#2**

November 8th, 4:30pm-8:30pm

### **MUST ATTEND ONE CLASS**

#### **SIGN UP INFORMATION:**

PLEASE CONTACT SOFIA AT THE LOCAL 28 JOINT APPRENTICE CENTER TO SIGN UP. CLASS WILL BE FILLED ON A FIRST TO SIGN UP BASIS AS THERE IS A 25 STUDENT MAX FOR THE CLASS. SO SIGN UP FAST TO RESERVE YOUR SPOT.

SHEETMETAL WORKERS LOCAL 28

JOINT APPRENTICE CENTER

139-20 JAMAICA AVE

JAMAICA, NY 11435

718-297-5570 ph

718-658-4227 fax